

HLX Series

Hi-Rel, Hybridized, Surface-Mount

PRODUCT FEATURES

- Hermetically-sealed per MIL-STD-883

GENERAL CHARACTERISTICS

- Frequency: 50 MHz - 12 GHz
- Bandwidth: Fixed, to > 30%
- Phase Noise (Fout=1 GHz): <-100 dBc/Hz @ 10 KHz
- Temperature Range: -40°C to +85°C Operating
- SMT Package: 0.8" x 0.8" x 0.15"
(20.3 x 20.3 x 3.8)mm



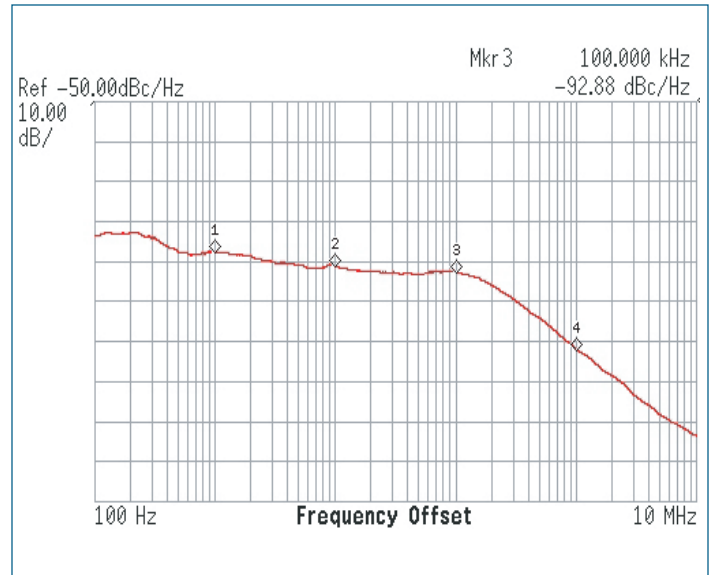
Custom
Designs
Available

Typical Performance for Select Units

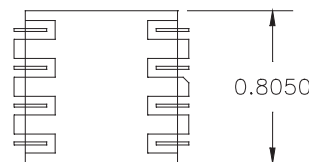
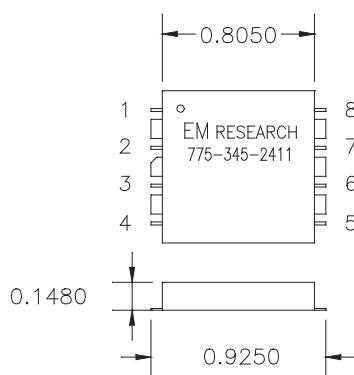
Model #	Freq. (MHz)	Step		Power				Supply	
		Size (KHz)	Out (dBm)	Harm. (dBc)	Phase Noise (dBc/Hz)	Spurs (dBc)	Voltage (Vdc)	Current (mA)	
HLX-615-XX	615	na	+7	-15	-96	-120	-60	+5	55
HLX-715-XX	715	na	+7	-15	-96	-120	-60	+5	55
HLX-765-XX	590-765	1000	+7	-12	-89	-108	-60	+5	55
HLX-765-XX	590-765	1000	+7	-12	-89	-120	-60	+5	55
HLX-1015-XX	1015	na	+7	-15	-96	-120	-60	+5	55
HLX-1065-XX	1065	na	+7	-15	-96	-120	-60	+5	55
HLX-1300-XX	1300	na	+7	-12	-98	-118	-75	+5	60
HLX-2000-XX	2000	na	+7	-15	-95	-115	-60	+5	65
HLX-2275-XX	2275	na	+9	-23	-93	-113	-60	+5	80
HLX-2350-XX	2350	na	+9	-23	-93	-113	-60	+5	80
HLX-2525-XX	2375-2525	100	+5	-20	-90	-110	-55	+5	55
HLX-5900-XX	5600-5900	100	+5	-15	-80	-100	-55	+5	60
HLX-10000-XX	10000	na	+0	-20	-80	-90	-60	+5	170
HLX-12100-XX	12000-12100	250	+7	-15	-75	-95	-60	+5	150
HLX-12500-XX	12500	na	+7	-15	-75	-95	-60	+5	150

*Custom frequencies available. All specifications are typical unless otherwise specified and subject to change without notice.

Phase Noise @ 10 GHz



Package



PIN OUT

PIN	OUT
1	REF IN
2	VCCt
3	NC
4	NC
5	VCC-A
6	RF_OUT
7	VCC-D
8	LOCK

ALL OTHER PINS ARE GROUND

Note: All dimensions are in inches, unless otherwise specified

*Drawing not to scale